



X-306 Oven Monitor

Monitoring Program to for X-REFLOW306 Series Ovens to display and store temperatures of the oven thermocouples and additional two thermocouples connected to TCT and TCB sockets located on the oven's back panel.

Version 2.0

Revision 2.0

September 2012

Bokar International

650 Scranton Pocono Hwy
Covington Twp, PA 18444, USA
Tel: (570) 842-2812 Fax: (570) 842-4290
E-Mail: bokar@bomir.com

www.bokar.com www.X-1003.com
www.ZeroCharge.net www.ESDmeters.com
www.SMTreballing.net www.FineRework.com

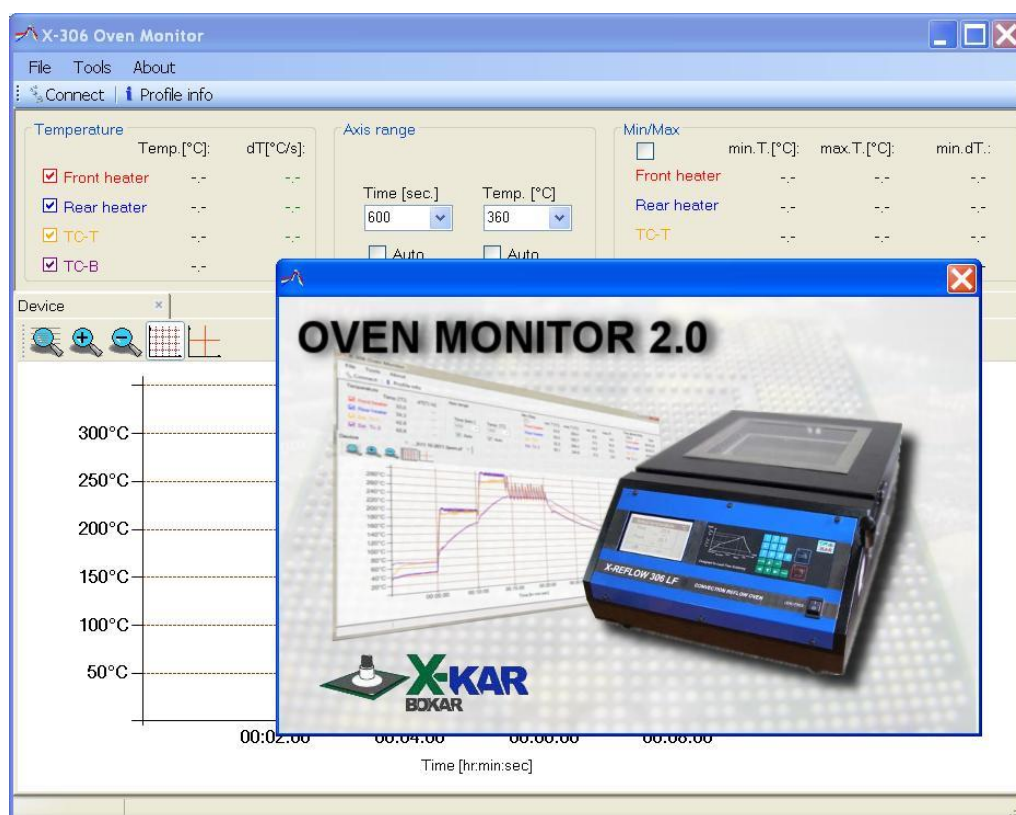


www.BestBatchOven.com

Introduction

The X-306 Oven Monitor program allows for:

- Monitoring in real time air or N2 temperatures inside the oven and the two temperatures of the object to which TCT and TCB thermocouples are connected
- Storage on the PC of the four monitored temperatures
- Printing the stored time / temperature graphs
- Export to Excel stored information of the time / temperature graphs



GLOSARY of TERMS

- Profile - Actual Time / Temperature characteristics achieved during Rework Process
- License Key - The file needed to make a connection between X-REFLOW306 and a PC. This file identifies the individual X-REFLOW306 serial Number and allows for communication between the oven and the X-306 OvenMonitor Program. The License Key can be purchased from your local Bokar International Distributor.

X485-USB - A converter allowing for connection of the oven via X-REFLOW306 DATA STORE port with USB Port of a PC.

I. Installation instructions

1. Unpack zip file: Oven-Monitor 2.0.10.zip on a Hard Disc of Your PC:

All unpacked files must be together in the same folder.

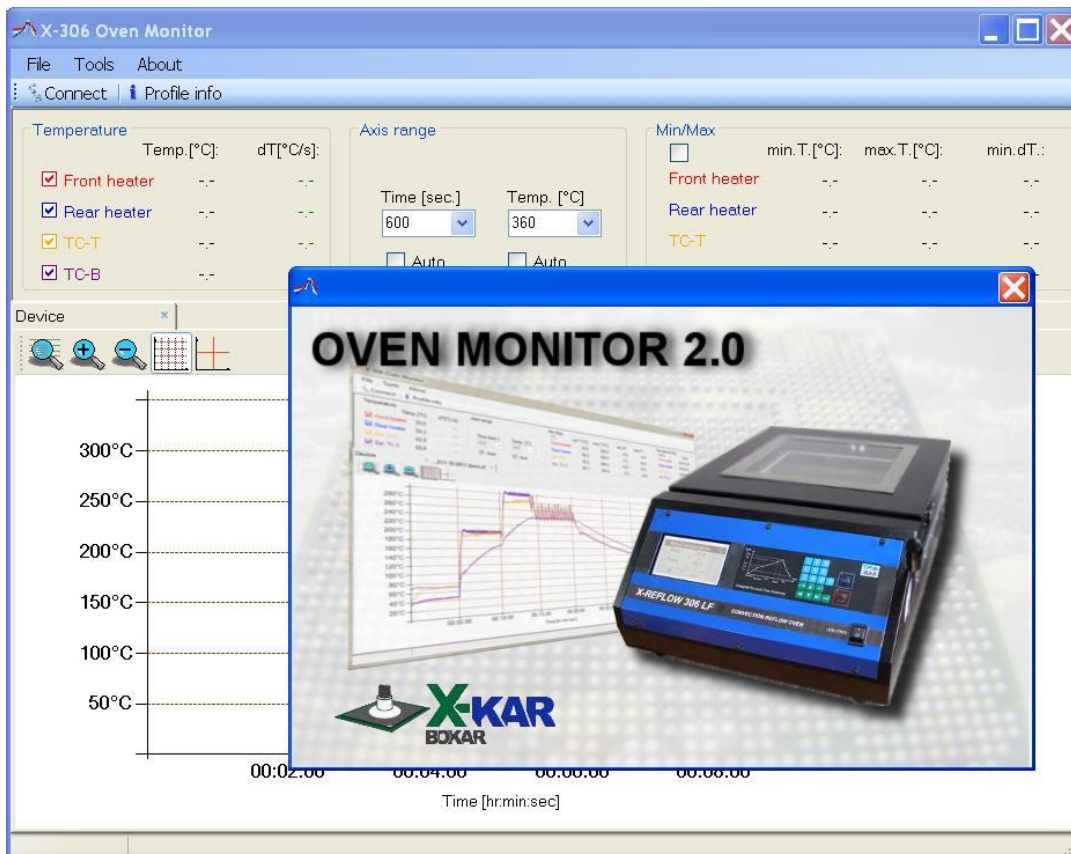
The files are listed below:

DocumentFormat.OpenXml.dll

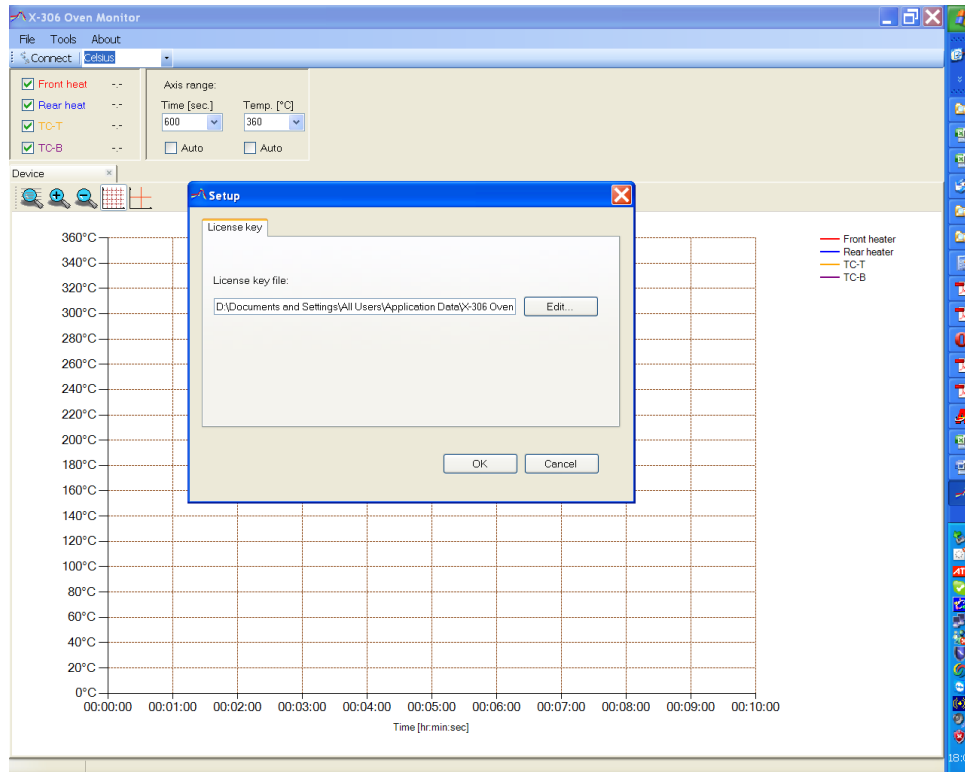
FTD2XX_NET.dll

OvenMonitor.exe

2. Save the file Key_xxx.lic on the Hard Disc Your PC
3. Run the file: **OvenMonitor.exe**
and start Oven Monitor program from start menu on your PC



4. Go to **Tools** and **Options**



Choose **Edit** button and find the location of the file:

Key_xxx.lic (You have saved this file earlier on Your Hard Disk);

Press OK button.

5. Connect **X-REFLOW306** to a PC using X485-USB Converter.
Press **Connect** (Top/Left corner on the Menu for X-306 Oven Monitor).
This will connect the oven with your pc.

Note:

If your computer will not connect to the oven via X485-USB Converter,

unzip the file "X485-USB converter_driver.zip" and run file "CDM20600.exe".

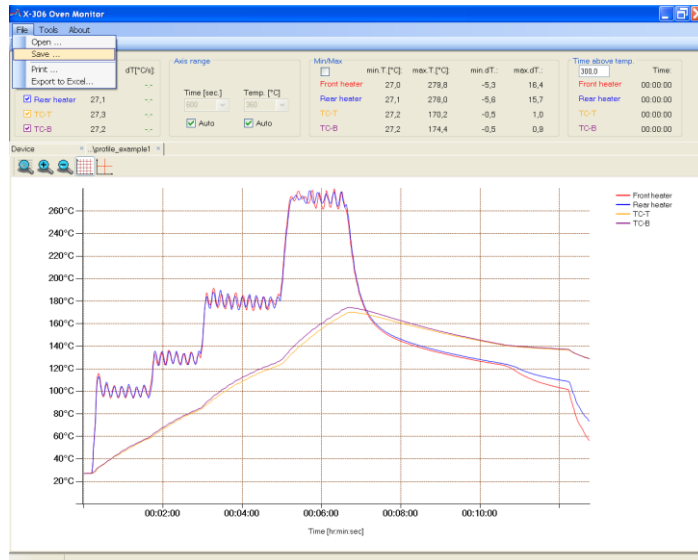
II. MAIN WINDOW

The screenshot shows the main window of the X-304 Oven Monitor software. It features a top menu bar (File, Tools, About), a central data table, and a large graph area at the bottom. Callouts point to specific elements:

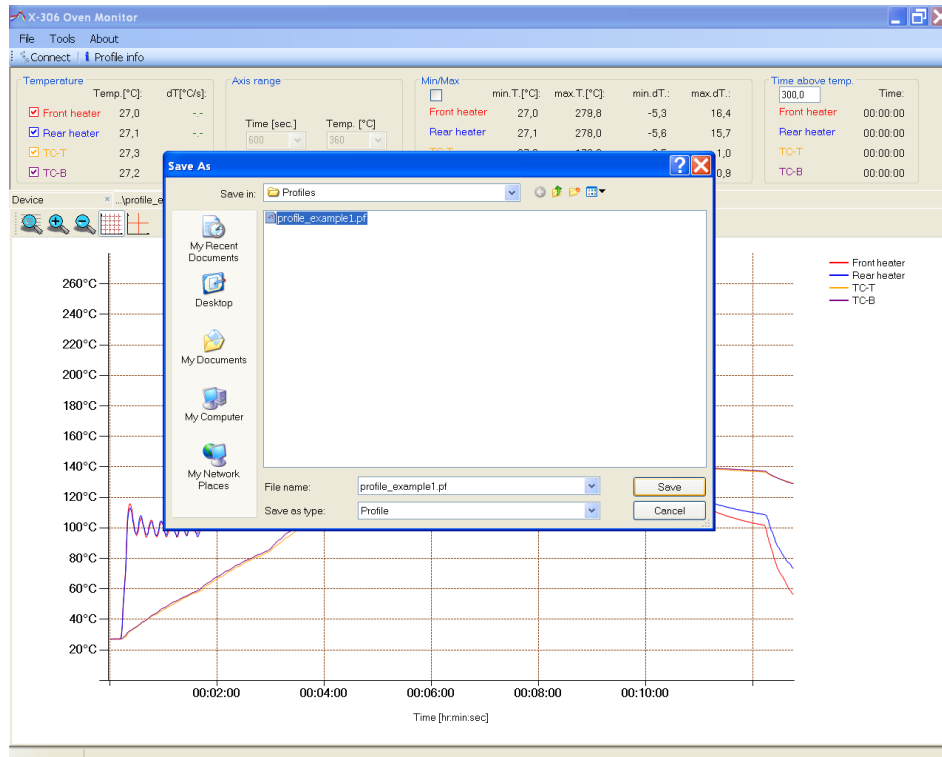
- Main menu:** Points to the 'File' menu.
- Choose which thermocouple readings you want to display:** Points to the 'Temp' column in the data table, where 'TC-T' and 'TC-B' are selected.
- Axis range modification:** Points to the 'Axis range' section, showing 'Time [sec]' set to 600 and 'Temp [°C]' set to 360.
- Display Area to observe Profile in real time:** Points to the graph area, which shows a temperature profile over time for Front heater, Rear heater, TC-T, and TC-B.

III. Saving profiles

When you already have a profile on the screen and you want to save it, select from the Menu: “File” , and then “Save ”

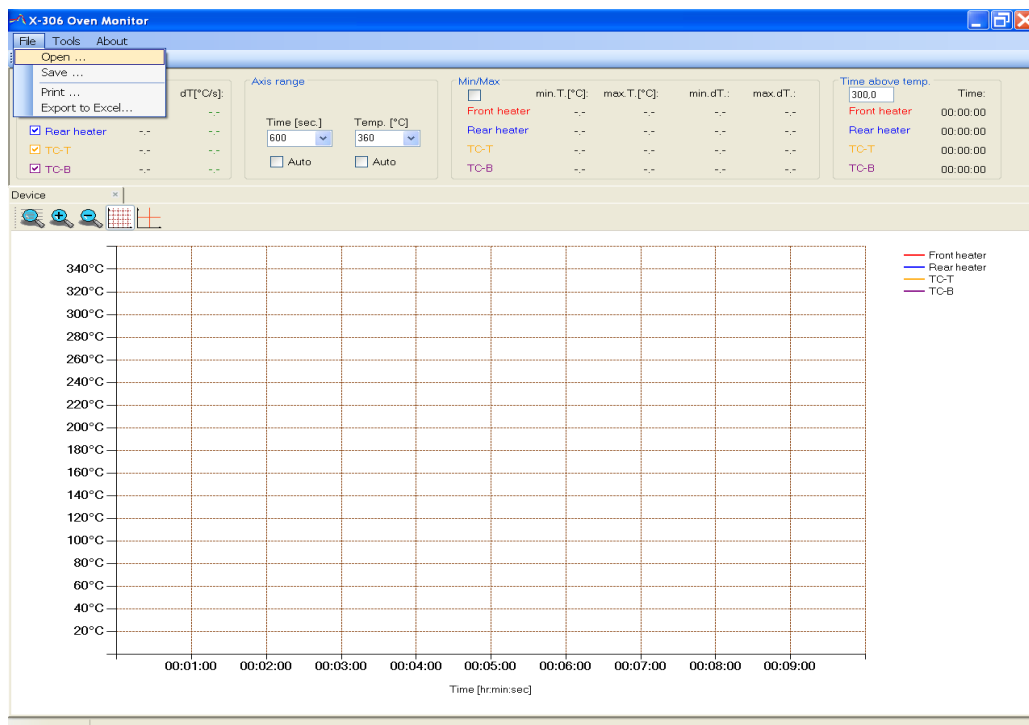


Select where you want to save it on your computer, enter the file name and save by clicking the Save button

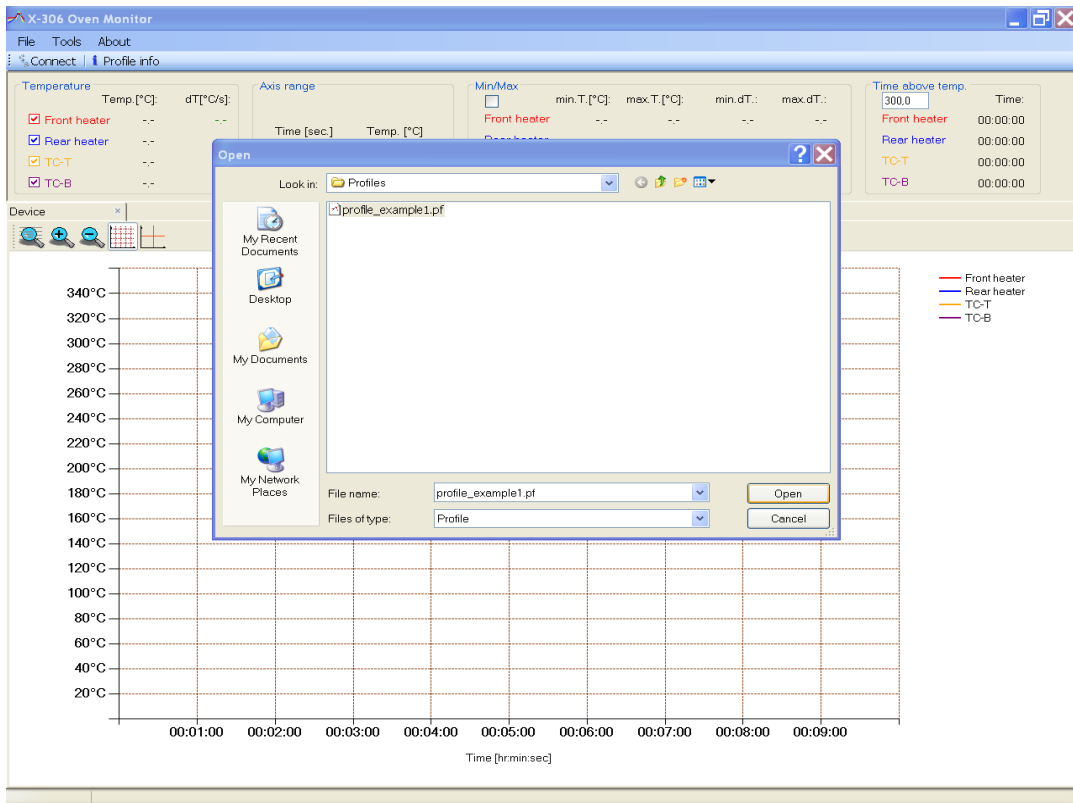


IV. Reading saved profiles

Open the file: chose from the Menu "File" and then "Open"



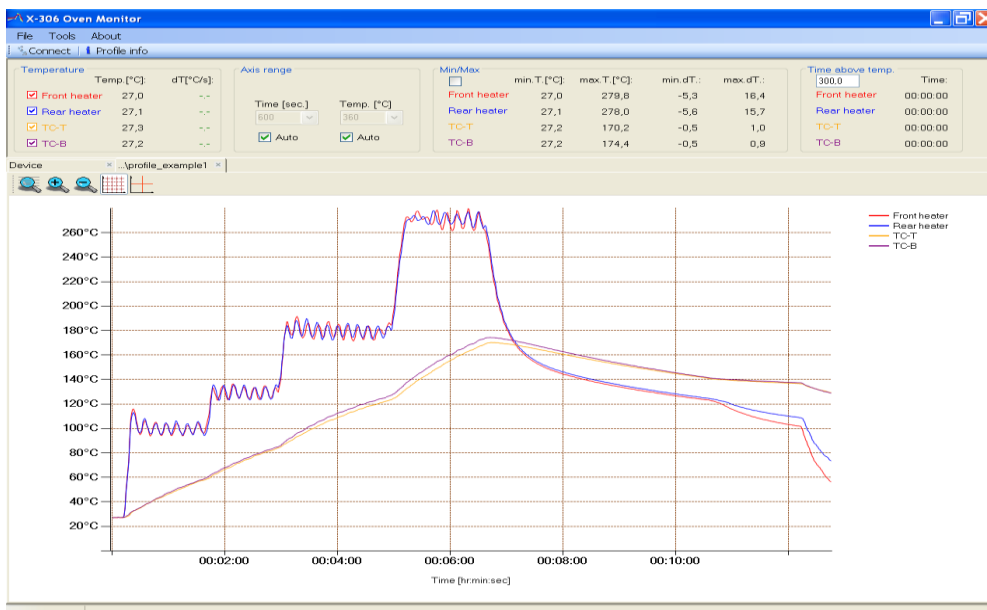
Chose “profile-example1.pf” or other file and open it:



The profile loads from PC where it was saved.

It shows four thermocouples:

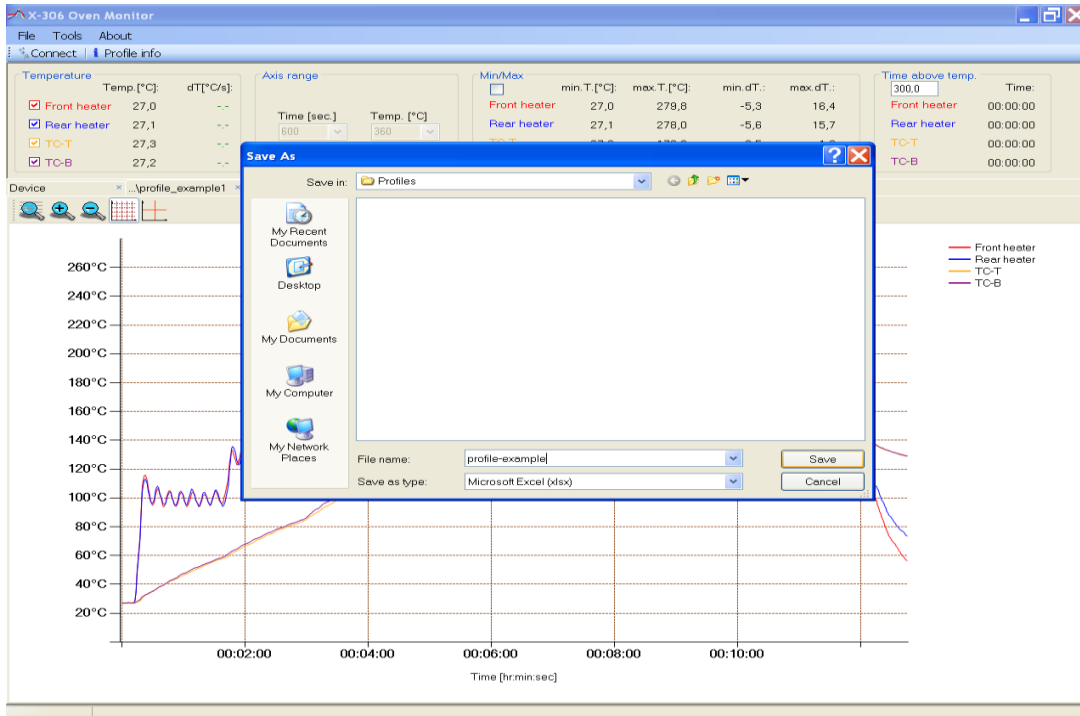
- Two thermocouples: Located above Front and Rear heaters.
- Two thermocouples: connected to the TC-T and TC-B on the back panel and possibly to the PCB heated in the oven.



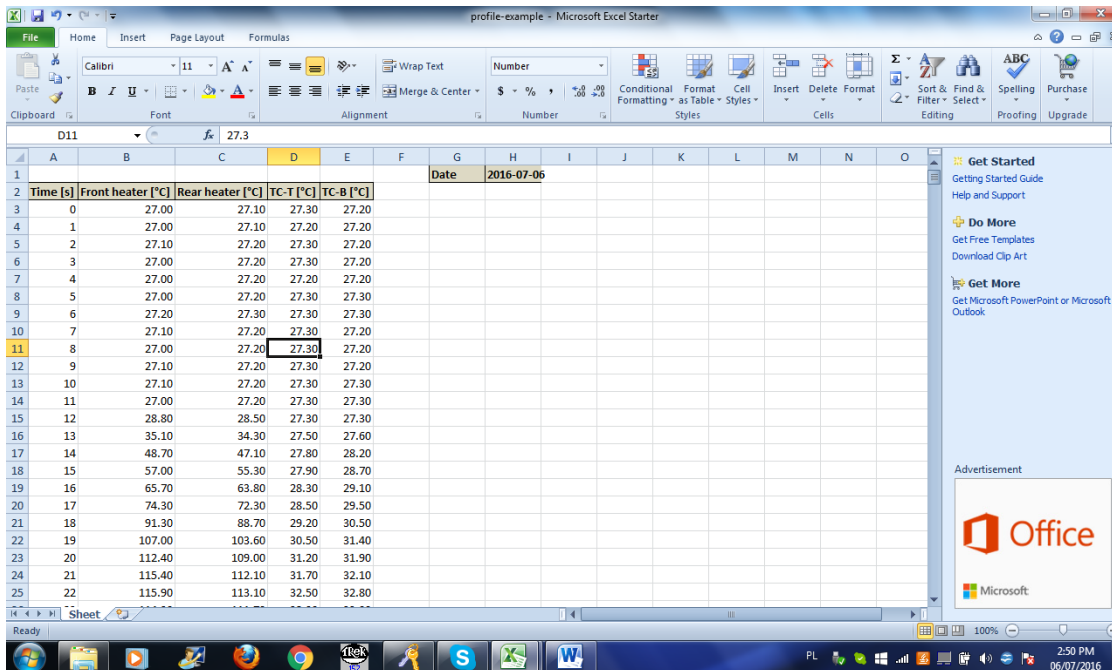
V. Export the graph to the the Excel file

If You want export the graph to the excel file, chose from the menu: "File" and then "Export to Excel". Enter the file name and chose the place to save excel file.

Click "Save" button and the excel version of your graph is saved to your specified location.

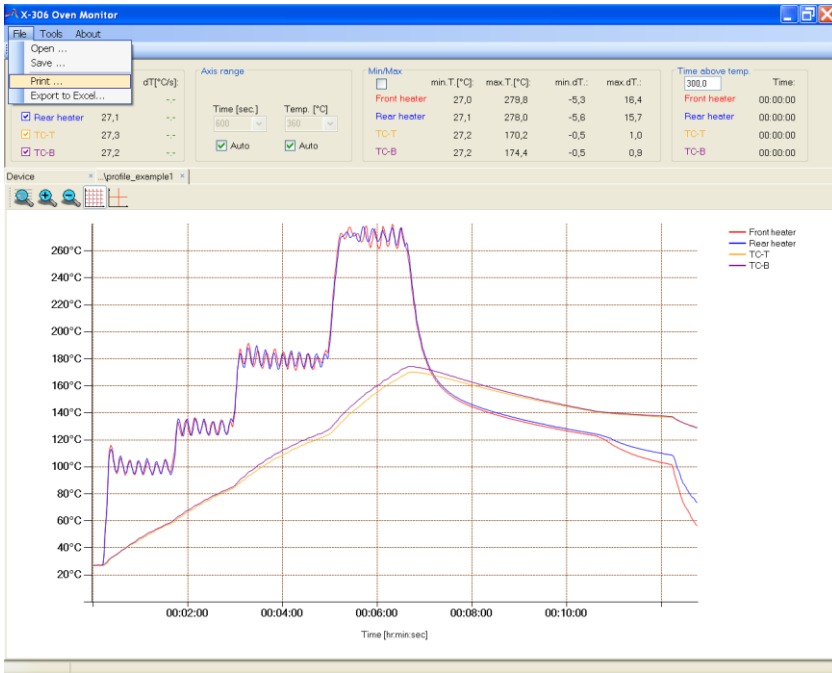


When you open the excel file it will look as shown below:

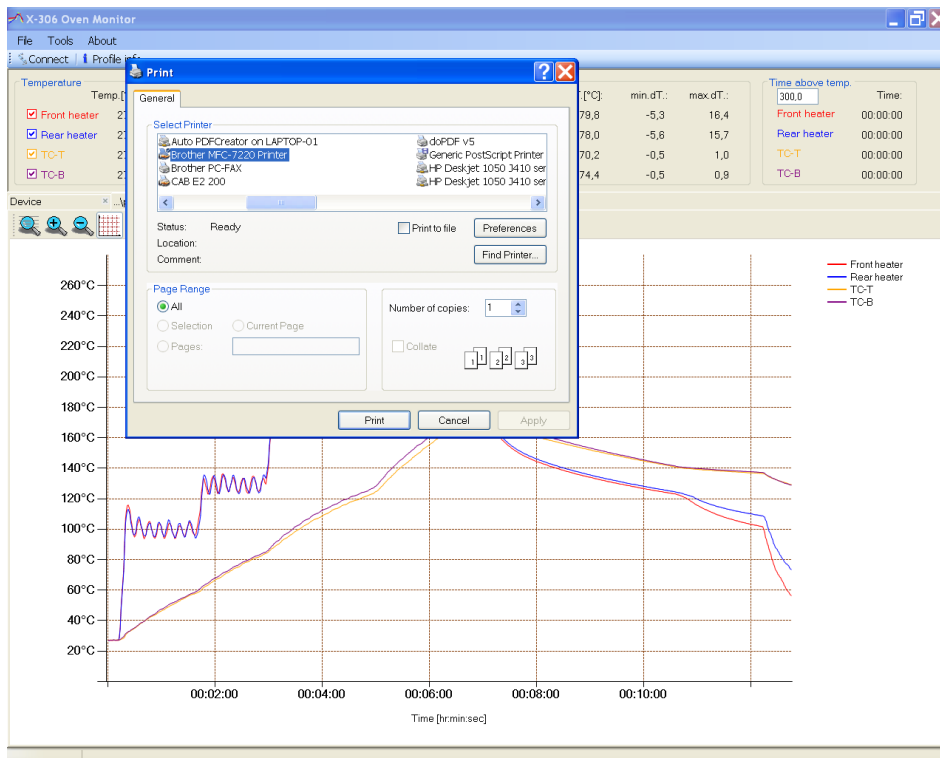


VI. Printing the graphs:

if you want to print on the graph: select "Print" from the Menu.



And select the printer which you want to use to print your graph. Click "Print"





BOKAR International

650 Scranton Pocono Hwy.,
Covington Twp. PA 18444, USA
Tel: (570) 842-2812 Fax: (570) 842-4290
www.bokar.com e-mail: bokar@bokar.com

Other Bokar International www pages describing individual products in detail:



SMT: www.Assembly-SMT.com www.FineRework.com www.X-Reflow306.com,
www.X-1003.com www.SMTrepair.com www.SMTFocus.com
www.SMTdispenser.com www.BestBatchOven.com www.SMT-tool.com

ESD: www.ESDapparel.com www.ESDmeters.com www.ESDpackaging.net
www.ZeroCharge.net www.No-Stat.com www.ESDchair.com
www.ESDIabcoats.com www.ESDcarts.net www.ESDbrushes.com

Other: www.Super-Iron.com

Latest Additions: www.ProportionAir.com www.FumeExtract.com

www.FumeXtraction.com and www.ULT.de (We represent ULT in the USA, Canada and Mexico)